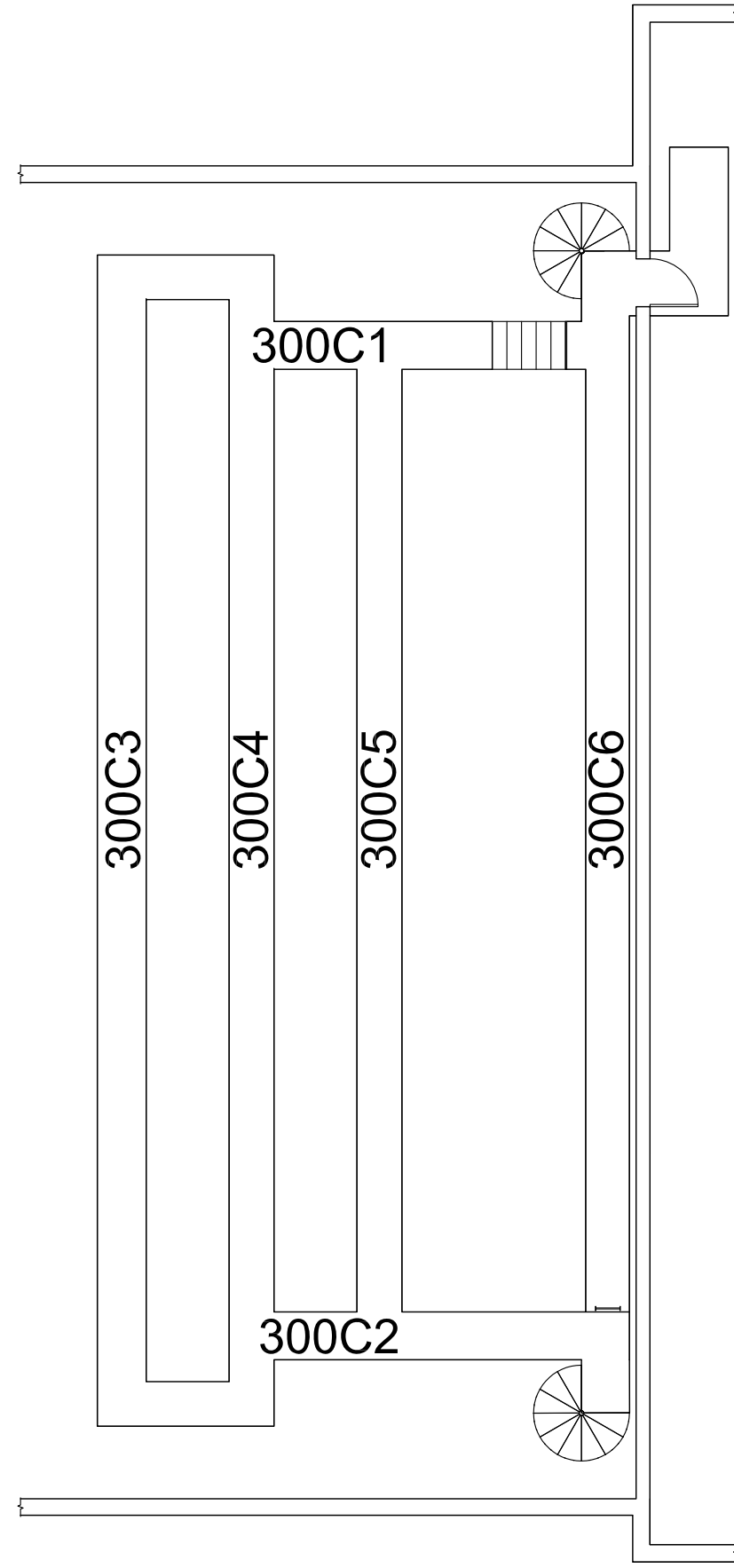
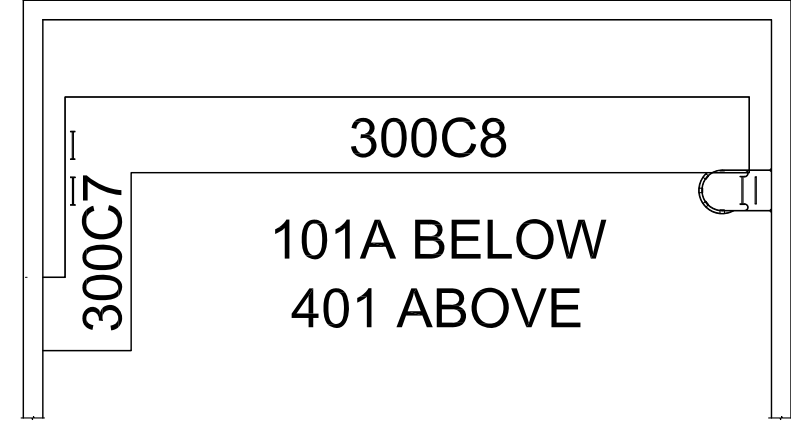


303

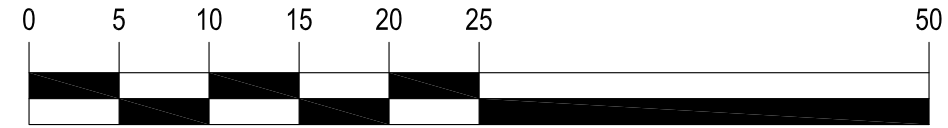
FOLLOW SPOT



CATWALKS



LOADING GALLERY



**UNIVERSITY of ALASKA ANCHORAGE**  
**OFFICE OF FACILITIES PLANNING,**  
**AND CONSTRUCTION**  
3890 University Lake Drive, Suite 110  
Anchorage, AK 99508



Updated By:	B Max
Date Updated:	1.27.15
Checked By:	L.Mansell
Date Checked:	4.22.15
Scale:	3/32"=1'-0"
Sheet 4 of 5 Sheets	

VALLEY CENTER FOR ARTS AND LEARNING  
THIRD FLOOR  
BUILDING NO.: MS112  
MATANUSKA-SUSITNA CAMPUS  
MILE 2.0 TRUNK ROAD (PO BOX 2889)  
PALMER, ALASKA 99645