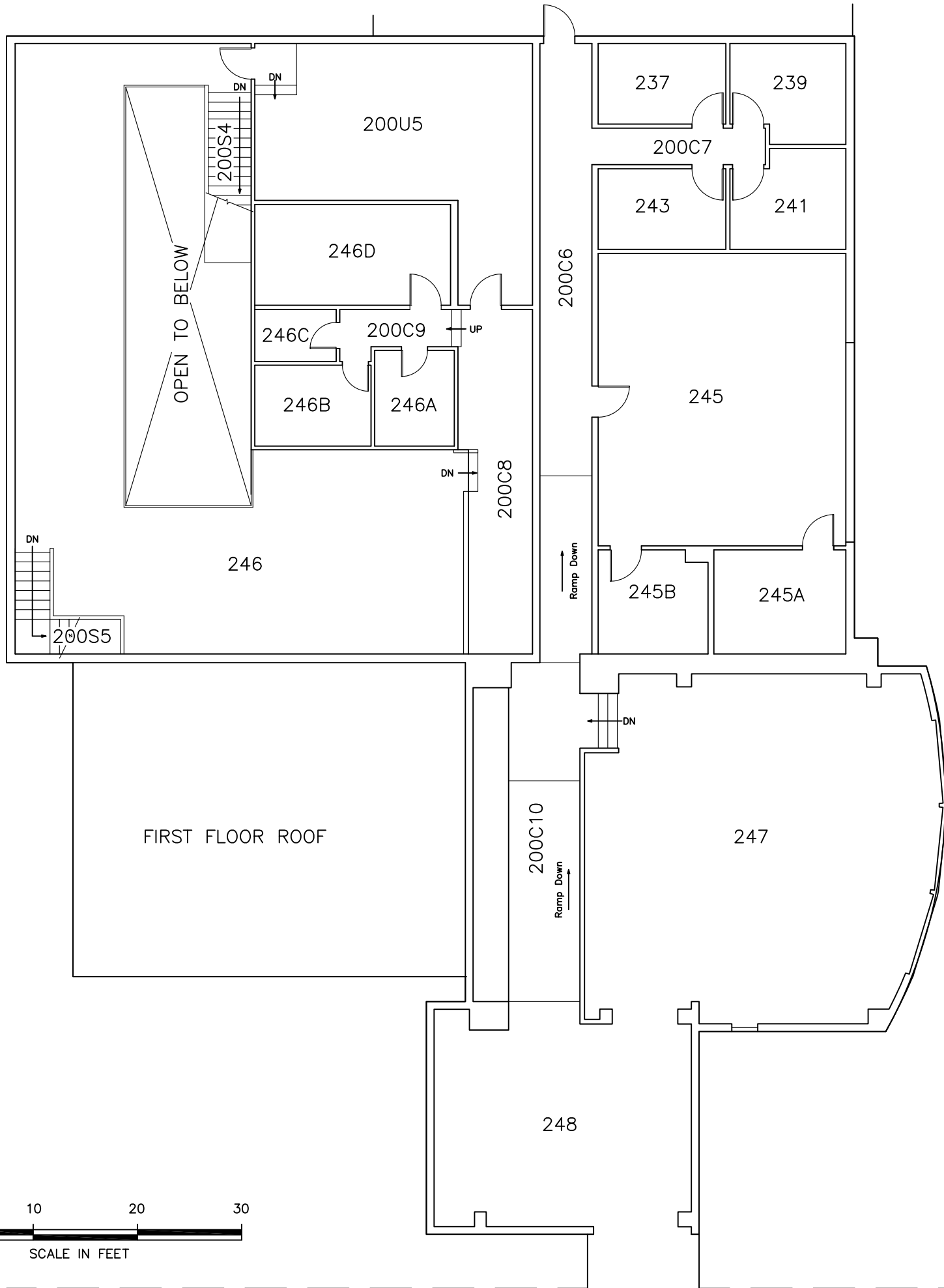




KP105



KP101

UNIVERSITY of ALASKA ANCHORAGE

OFFICE OF FACILITIES PLANNING
AND CONSTRUCTION

3890 University Lake Drive, Suite 110
Anchorage, AK 99508



Updated By:	B Max
Date Updated:	6.8.15
Checked By:	
Date Checked:	
Scale:	1" = 12'
Sheet 2 of 3 Sheets	

CLARENCE GOODRICH BUILDING
SECOND FLOOR
BUILDING NO.: KP102

KENAI PENNINSULA CAMPUS
156 COLLEGE ROAD
SOLDOTNA, ALASKA 99669