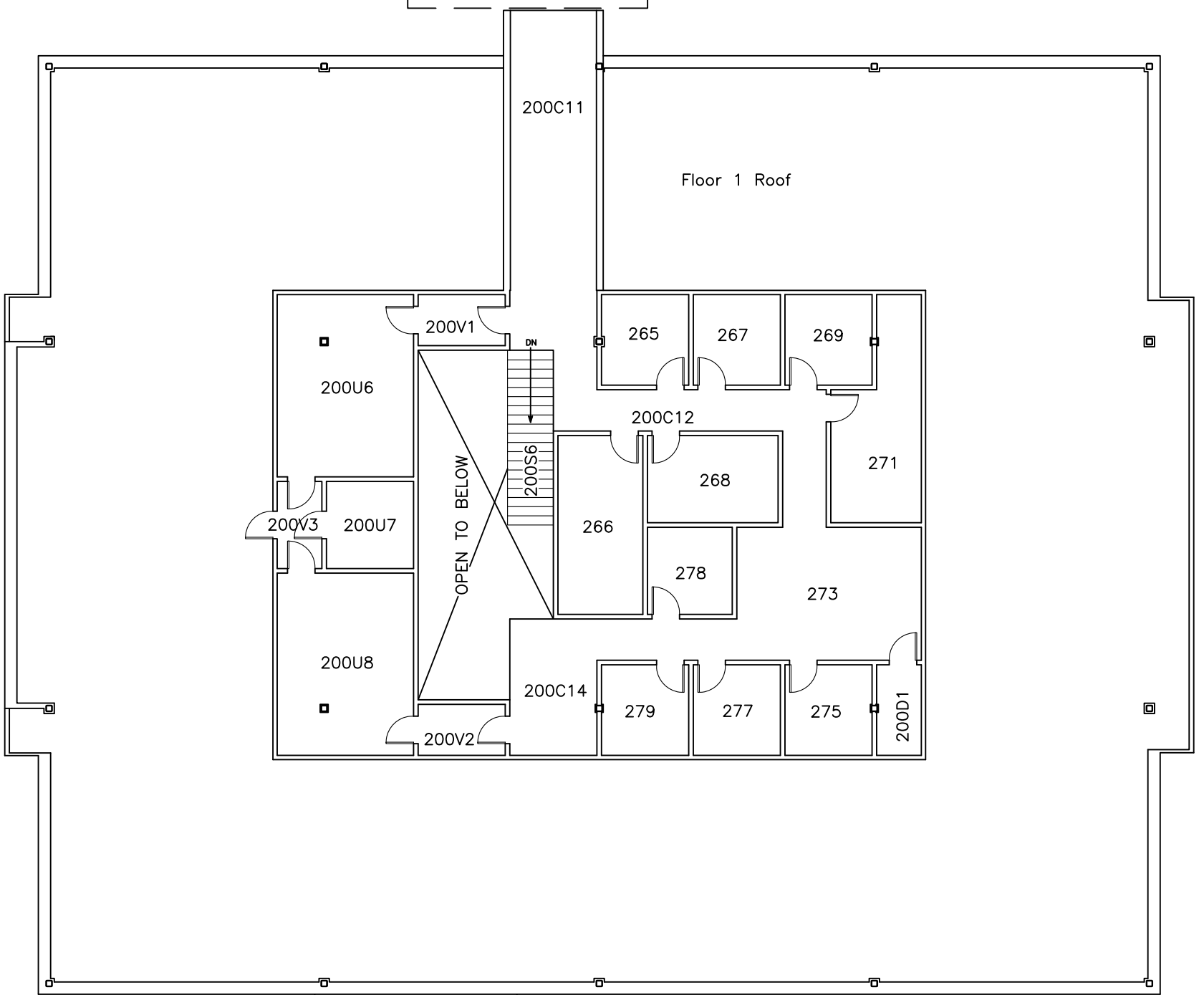




KP102



KP103



UNIVERSITY of ALASKA ANCHORAGE



**OFFICE OF FACILITIES PLANNING
AND CONSTRUCTION**

3890 University Lake Drive, Suite 110
Anchorage, AK 99508



Updated By:	B Max
Date Updated:	6.8.15
Printed By:	
Date Printed:	
Scale:	1" = 15'
Sheet 2 of 3 Sheets	

**ENID S. McLANE BUILDING
SECOND FLOOR**

BUILDING NO.: KP101

KENAI PENINSULA CAMPUS
34820 COLLEGE DRIVE
SOLDOTNA, ALASKA 99669