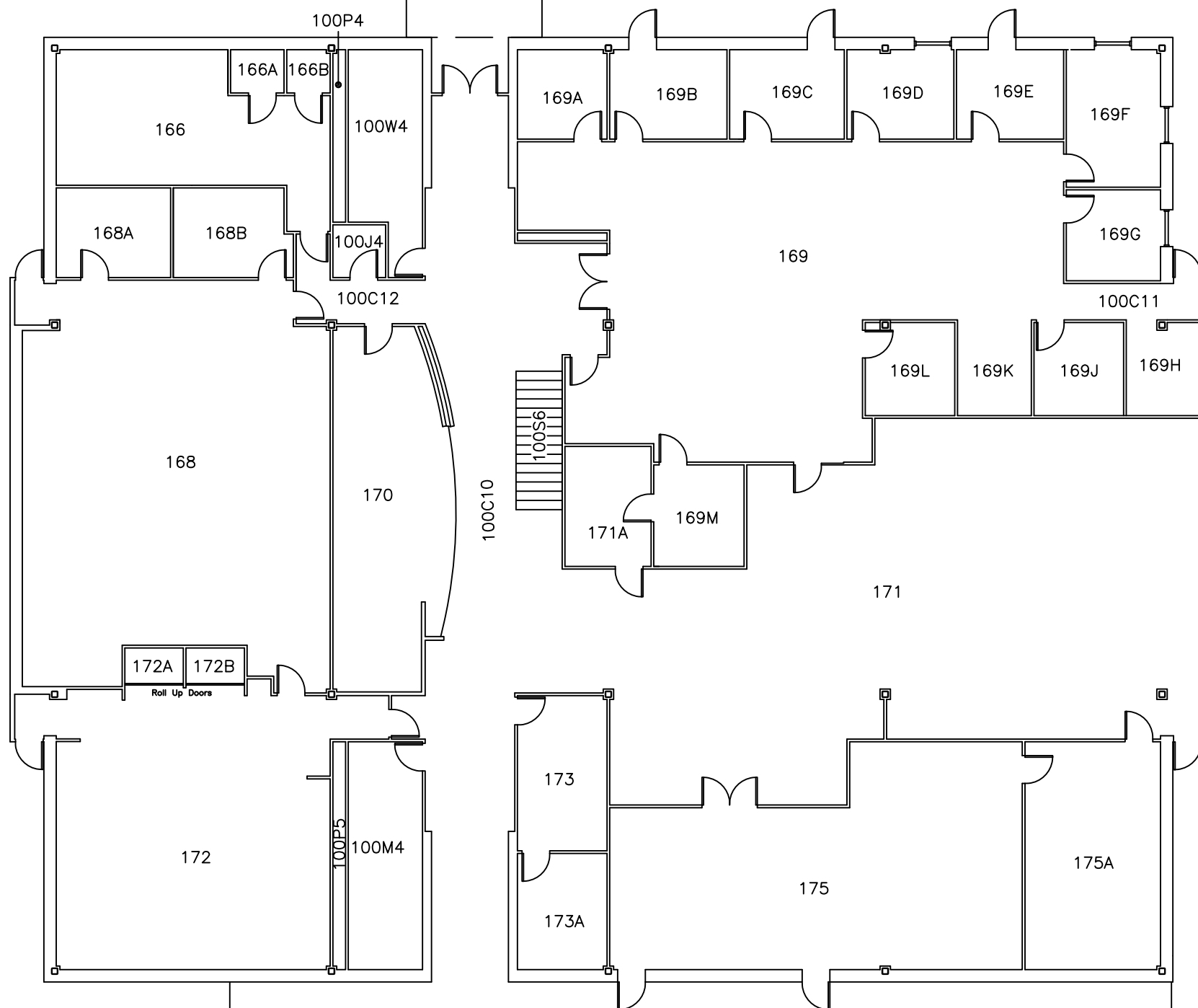




KP102



SCALE IN FEET

UNIVERSITY of ALASKA ANCHORAGE

OFFICE OF FACILITIES PLANNING
AND CONSTRUCTION

3890 University Lake Drive, Suite 110
Anchorage, AK 99508



Updated By:	BMAX
Date Updated:	6.3.15
Checked By:	
Date Checked:	
Scale:	1"=15'-0"
Sheet 1 of 3 Sheets	

ENID S. McLANE BUILDING
FIRST FLOOR
BUILDING NO.: KP101

KENAI PENINSULA CAMPUS
156 COLLEGE ROAD
SOLDOTNA, ALASKA 99669